

About Samsung

Samsung Electronics Co., Ltd. is a global leader in technology, opening new possibilities for people everywhere. Through relentless innovation and discovery, we are transforming the world of TVs, smartphones, tablets, PCs, cameras, home appliances, printers, LTE systems, medical devices, semiconductors and LED solutions. We employ 286,000 people across 80 countries with annual sales of US\$216.7 billion. To discover more, please visit www.samsung.com.

For more information

For more information about Samsung GM60A, visit www.samsung.com/global/business/healthcare.



SUPERIOR IMAGING ON THE GO

Mobile Digital Radiography GM60A



SAMSUNG

Copyright © 2014 Samsung Electronics Co. Ltd. All rights reserved. Samsung is a registered trademark of Samsung Electronics Co. Ltd. Specifications and designs are subject to change without notice. Non-metric weights and measurements are approximate. All data were deemed correct at time of creation. Samsung is not liable for errors or omissions. All brand, product, service names and logos are trademarks and/or registered trademarks of their respective owners and are hereby recognized and acknowledged.

SAMSUNG



DELIVER HIGH-QUALITY IMAGING DIRECTLY TO THE PATIENT'S BEDSIDE

GM60A delivers:

- Effortless workflow with advanced mobility**
 Users' daily routines are simplified with fast and productive workflow in a convenient wireless system.
- High diagnostic confidence with excellent image quality**
 S-Detector and S-Vue™ features support vital diagnostic clarity with outstanding imaging.
- Reliable operation with enhanced usability**
 GM60A offers dependable usability for recharge, storage, operation and communication.



Expanded access with advanced mobility

A fully motorized moving system enables access even to tight spaces and slightly inclined hallways.



Light pressure on the handle is enough to control the speed (up to 5 km/h) easily.



Large wheels and spring loaded wheels make moving around easy and absorb shock vibrations.



The sensor in the front bumper automatically stops the device if the slight pressure is detected.

GM60A delivers high quality care to different needs in a wide range of circumstances.

Patient room

Scan patients without moving them to X-ray room.



Operating room

Decide how to perform surgery and save the time.

Diagnose at site and make quick decisions.



Access fast to patients and monitor them after surgeries.

Intensive care unit

USER-FRIENDLY SOLUTIONS FOR EFFORTLESS WORKFLOW

Increased productivity with wireless S-Detector

- **Lightweight for flexible usage**

Wireless S-Detectors are lightweight for agile use and move quickly to serve a greater number of patients.

- **Varying sizes for optimal use**

S-Detectors are available in two different sizes: S4343-W and S4335-W. They provide fully personalized care from pediatric to bariatric patients and ensure optimized images for different sizes of body parts, such as hand, chest or spine.

- **Indicator system to eliminate confusion**

S-Detector's LED indicator signals the active detector to users by color lights.



Attentive positioning with easy-to-use controls

Fine positioning buttons offer handle-free and subtle 4-way adjustment. The system also offers extensive tube reach (70-125 cm), and a wide range of column rotation ($\pm 315^\circ$).

GM60A is suited for standard radiography positioning as well as for demanding positions such as those required for trauma patients. An optional dual laser function supports detailed positioning by verifying 1 m Source to Image Distance (SID).



Accelerated throughput with quick image acquisition

Preview and full images can be displayed in less than 3 sec and 10 sec,* respectively. Previews can be reshot or retrieved as full images.

A touch shutter feature allows users to crop regions of interest by simply touching two points.



* Image acquisition time may vary according to the image processing parameters and detectors.



EXCEPTIONAL IMAGES FOR DIAGNOSTIC ACCURACY

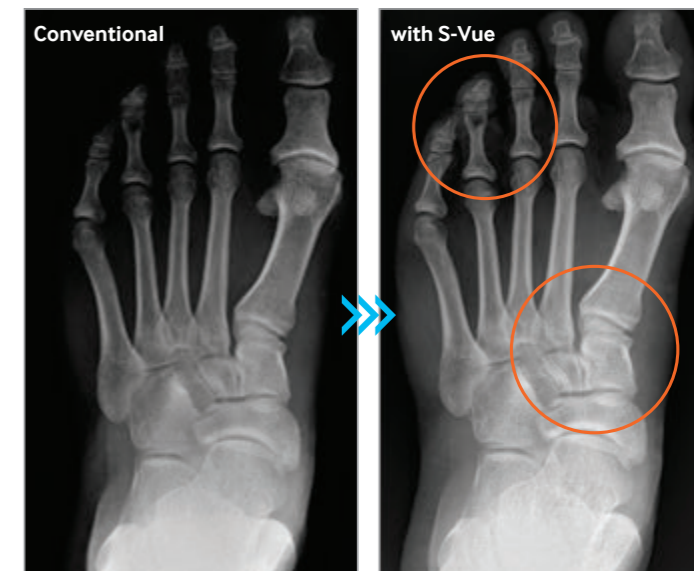
High-quality images with S-Vue™

Samsung's next-generation S-Vue imaging engine delivers high-resolution images through advanced processing and adaptive filtering and provides enhanced image contrast and sharpness.

S-Vue provides:

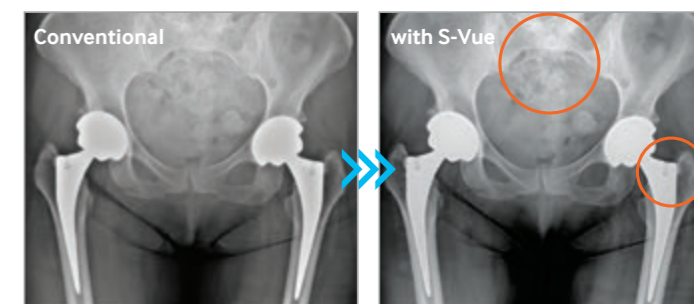
- **Improved image sharpness and clarity**

Thick and thin parts are clearly distinguished so that overlapping areas and contours are more sharply displayed.



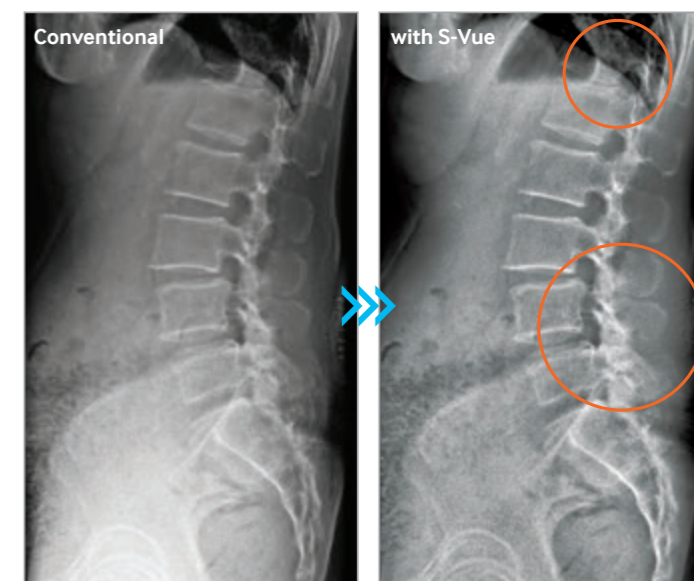
- **Ensured image reliability**

Even in the presence of an implant, regions of interest are displayed clearly and without artifacts. In the areas where bones overlap, each bone stands out clearly.



- **Great depth and range of image**

Highly clarified contrast of the regions of interest provides a clear and detailed display of bones and soft tissues in a single image. Images of patients' organs with different characteristics, such as lung, spine and inguinal region images, can be displayed in detail on a single page.



Results may vary depending on individual use.

ENHANCED USABILITY FOR RELIABLE OPERATION

Less downtime with concurrent detector charging and storage

The detector can be stored and charged simultaneously, even in motion. There is no need to connect cables and replace batteries. Always carry charged detectors and minimize downtime.



Seamless communications with simple data transfer

Straight wireless image transmission to the Picture Archiving and Communication System (PACS) overcomes space constraints. A tethered cable is available in case of Wi-Fi disruption or detector discharge.



Swift operations with an intuitive interface

A workstation with a 17-inch wide touchscreen, intuitive icons and buttons facilitates virtually effortless operation. The use of different battery indicators for exposure and mobile capability allows users to easily notice each battery level.



Wireless hand switch



Dose Area Product (DAP)



Portable grid

Optional accessories

Optional accessories in the table below are also available for purchase.

Accessory	Description
Wireless hand switch	The wireless hand switch allows the user to remote-control the system during image capture.
Bar code scanner	Bar code scanning enables easy upload of patient information.
Dose Area Product (DAP)	The DAP meter allows users to benefit from integrated dose reporting to PACS.
Portable grid	The lightweight grid for S4343-W or S4335-W provides effortless use of the wireless detector.
Additional cabinet (column)	One detector and one grid holder can be stored.
Quality Assurance Program (QAP)	QAP enhances quality control procedures by providing AI filter and phantom.
Variable filtration	Variable built-in beam filtration delivers low X-ray dose.

For more information on optional accessories, please contact a sales representative.



Faster and always on

Samsung Service increases operational efficiency and throughput rate with fast, systematic service and advanced technical support. The service also supports clients' growth and business innovation by sharing best practices with service engineers in 207 countries worldwide. To accomplish this, Samsung Service continually develops and offers a variety of customer service programs, such as maintenance solutions and the S-Care service offering.

CONSTANT SUPPORT FOR IMPROVED EFFICIENCY

Maintenance solution: 24/7, 365 days a year*

▶ **RMS (Remote Maintenance System)**

This system enables continuous monitoring of system errors, auto-diagnosis of the system and software version.

▶ **24/7 call center**

The customer support center operates 24/7, 365 days a year to quickly respond to clients' problems.

▶ **Upgrade service**

Samsung helps clients use the latest products through optional detector upgrades, along with hardware and software upgrades.

▶ **Service offering**

Samsung offers clients the flexibility to choose service support by allowing them to select the coverage to meet their unique requirements.



* Maintenance service availability may vary by country.