



ZIEHM VISION RFD
HYBRID
EDITION



A Ziehm Vision RFD Hybrid Edition C-arm is shown in a bright, modern operating room. The room features a high ceiling with a complex, white, grid-like structure that allows natural light to filter through. The floor is highly reflective, mirroring the equipment. The C-arm is white with teal accents and is positioned on a mobile cart. It has a large flat-panel detector and a control console with a monitor. The overall atmosphere is clean and professional.

ZIEHM VISION RFD THE NEW HYBRID EDITION

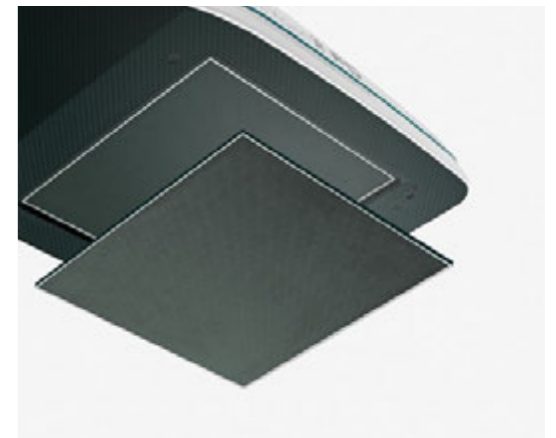
4 MOTORIZED AXES MOVEMENTS. FLAT-PANEL DETECTOR. 25 KW GENERATOR WITH LIQUID COOLING SYSTEM. DISTANCE CONTROL FOR COLLISION PROTECTION. POSITION CONTROL CENTER TO CONTROL MOTORIZED MOVEMENTS WITH A JOYSTICK.

The capabilities of the Ziehm Vision RFD Hybrid Edition make it ideally suited for hybrid room applications. Compared to fixed installations, the C-arm has one crucial advantage: mobility. Due to its small footprint and easy maneuverability, the system is quickly up and operational, requires no room modifications and can be flexibly deployed in the OR.

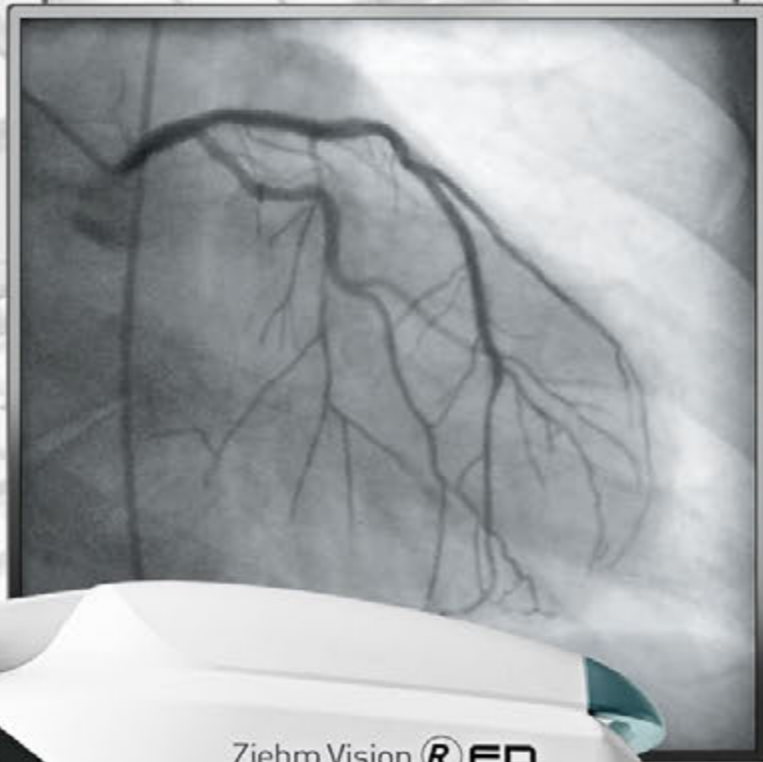


FULLY DIGITAL FLAT-PANEL FOR OPTIMAL IMAGES

Ziehm Vision RFD Hybrid Edition is equipped with the latest digital flat-panel technology. It generates images with 16,384 shades of gray and excellent contrast. Image dynamics of up to 84 dB enable visualization of both soft tissue and bone structure. Compared to conventional C-arms, the 1.5k x 1.5k image resolution of the new Hybrid Edition is significantly higher. It allows even smallest anatomical details to be precisely displayed.

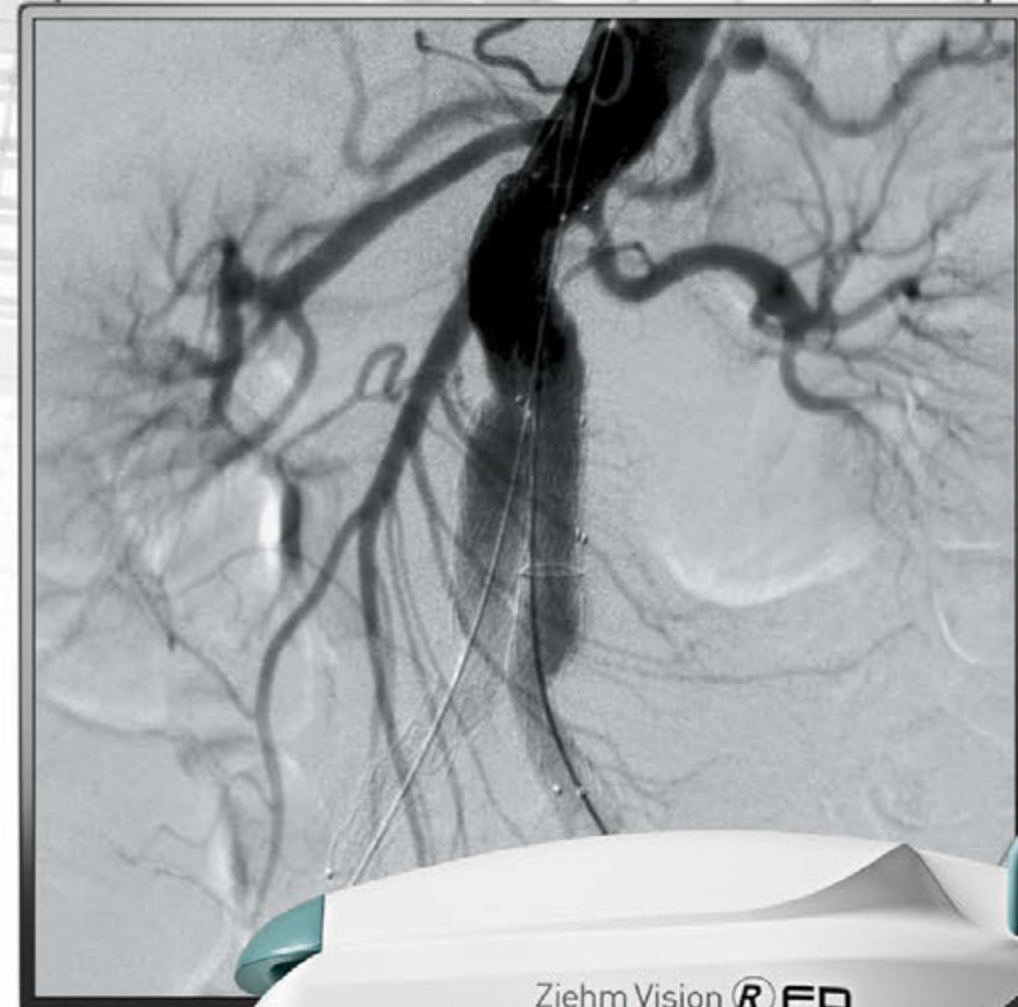


The removable grid for dose reduction can be mounted to the flat-panel detector at any time with just one click.



IMAGING FOR CARDIOLOGY AND CARDIAC SURGERY

The dimensions of the flat-panel detector play a crucial role in OR ergonomics. Ziehm Vision RFD Hybrid Edition features a 20 cm x 20 cm flat-panel that represents the optimum size for a wide range of clinical applications, particularly in the field of cardiology and cardiac surgery. In addition to the miniaturized design of the flat-panel detector, the isocentric movement of the C-arm enables clinical interventions such as coronary angiography, heart valve replacements and pacemaker implantation.



MAXIMUM FIELD OF VIEW FOR VASCULAR SURGERY

Alternatively Ziehm Vision RFD Hybrid Edition features a 30 cm x 30 cm flat-panel detector. The generous field of view with a 30 cm side length provides comprehensive information with each examination. This enables the C-arm to deliver high quality X-ray images that were previously only possible with fixed systems. Demanding vascular procedures such as angioplasties and EVAR can thereby be performed with a mobile C-arm.



COMPACT AND POWERFUL

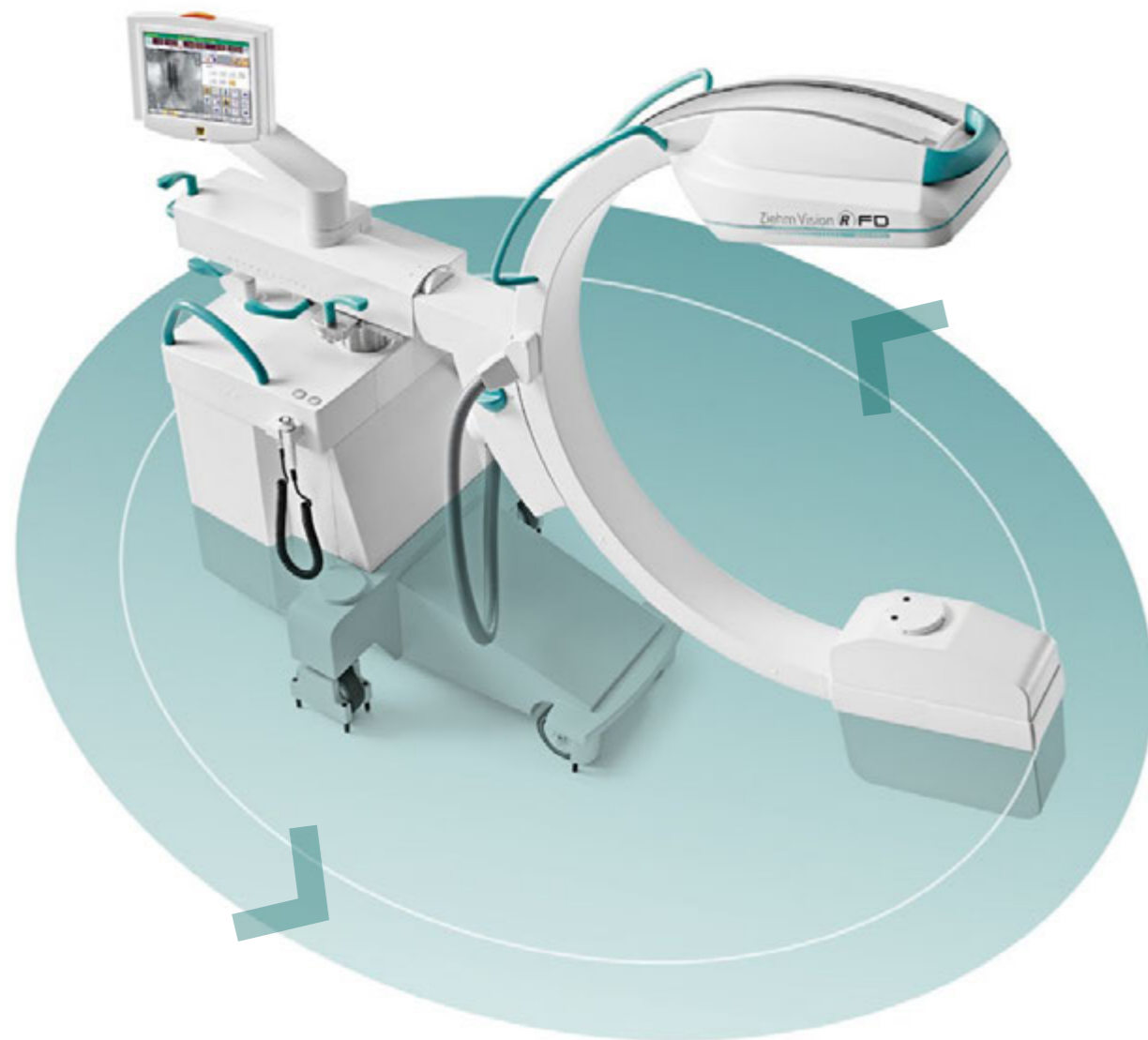
The newly developed monoblock generator with 25 kW nominal power in accordance with IEC60601-2-54 is one of the most powerful in the mobile field and delivers crystal-clear images. This outstanding imaging performance is particularly crucial for hybrid room applications. Despite its high power reserves, the generator features a very compact design that simplifies its positioning at the OR table.



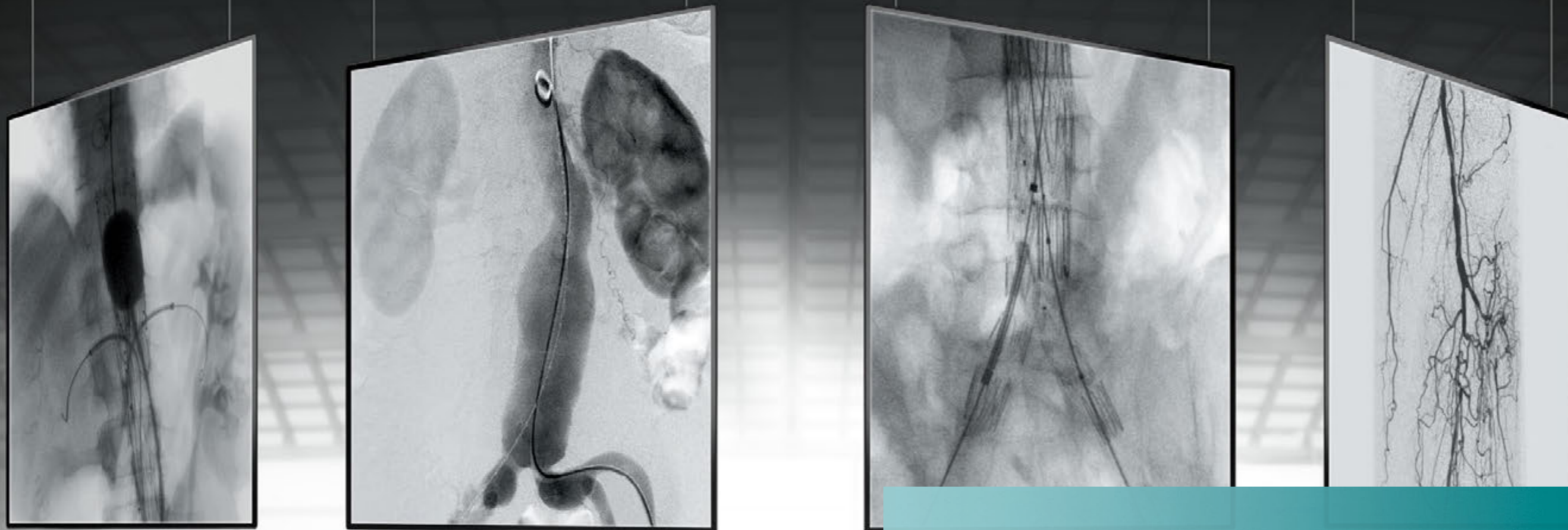
With dimensions of 40 cm x 40 cm x 18 cm, the powerful generator only requires a minimum of space.

LIQUID COOLING FOR CONTINUOUS USE

The unique liquid cooling system Advanced Active Cooling keeps the generator at a consistent operating temperature and prevents system failure due to overheating. Even during complex applications such as TAVI, angioplasties and EVAR, this C-arm thereby delivers reliable results for the duration of the entire procedure.



Intelligent heat management includes the unique liquid cooling technology, which is core for challenging surgical procedures.



VISUALIZATION OF EVEN THE SMALLEST DETAIL

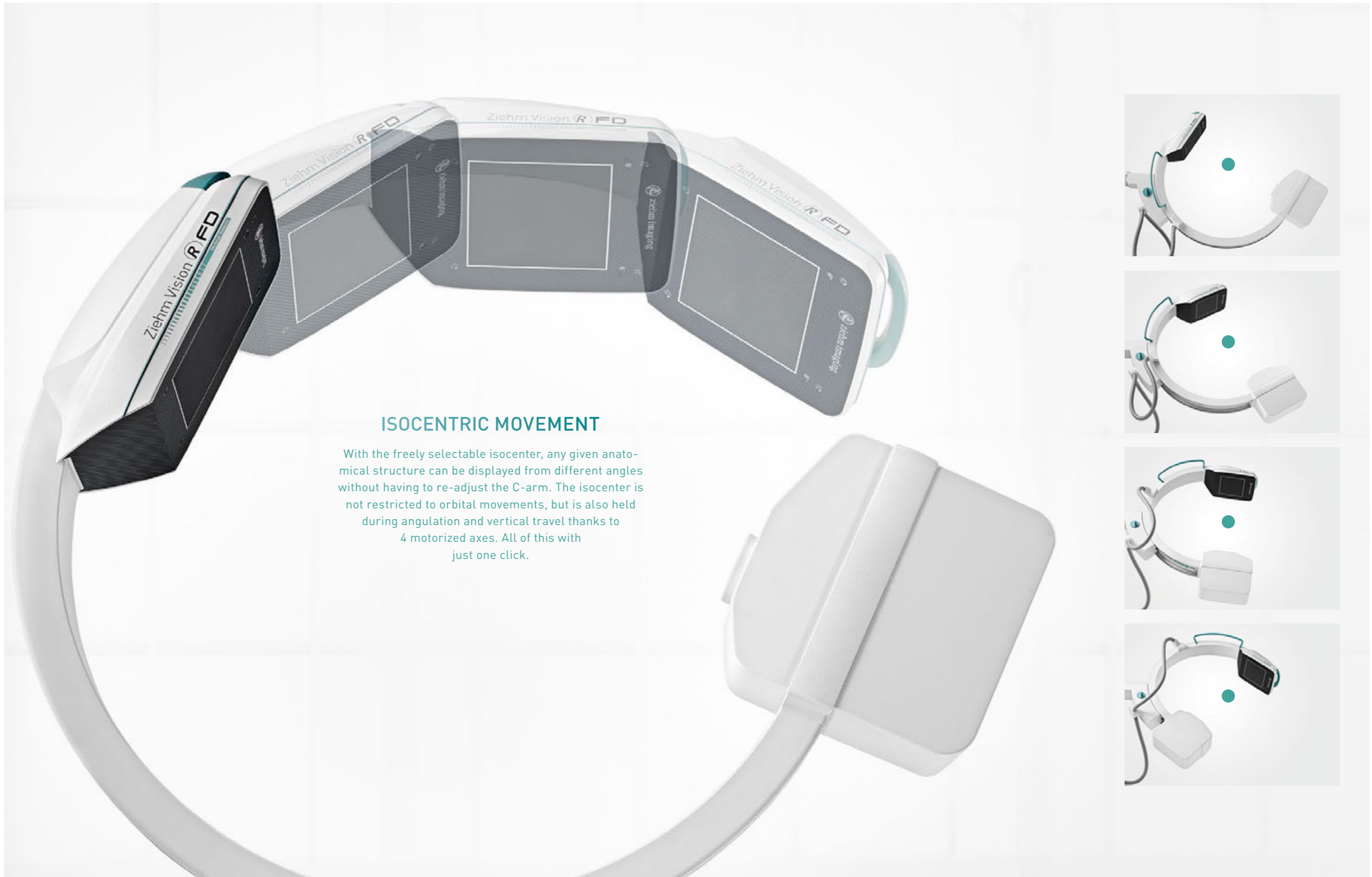
The launch of the new Ziehm Vision RFD Hybrid Edition sets another milestone

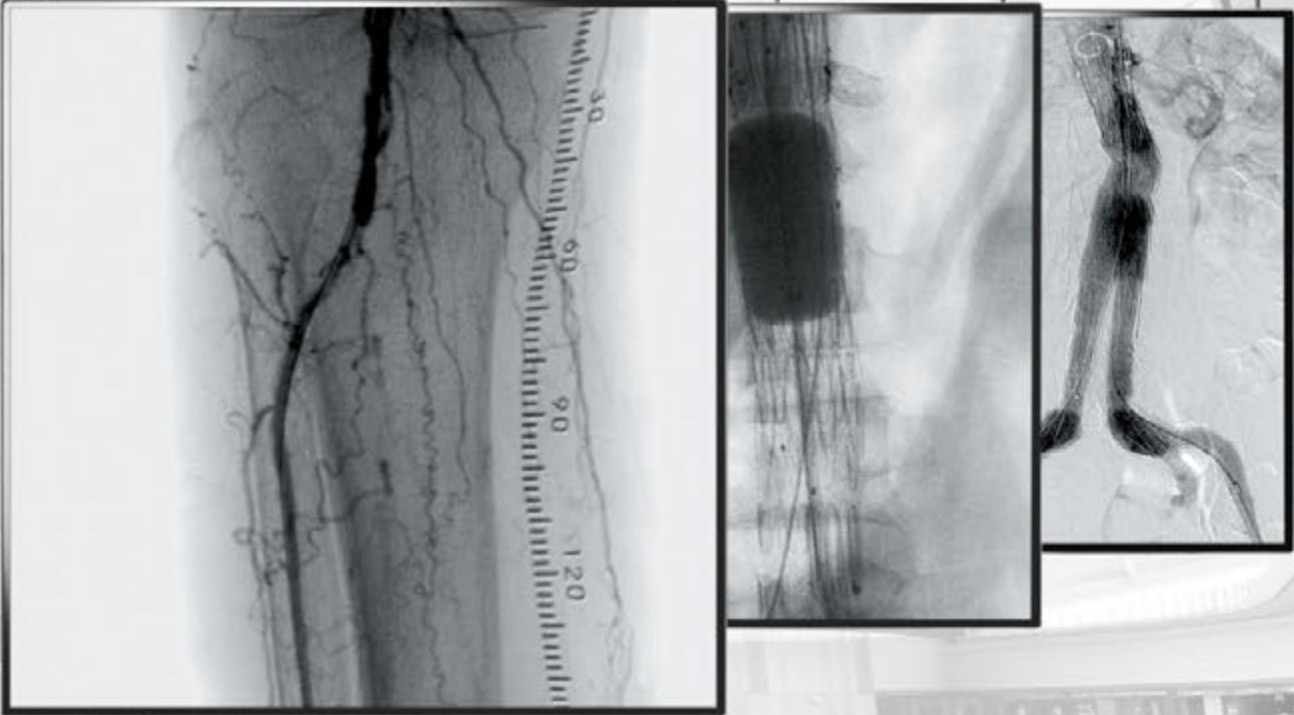
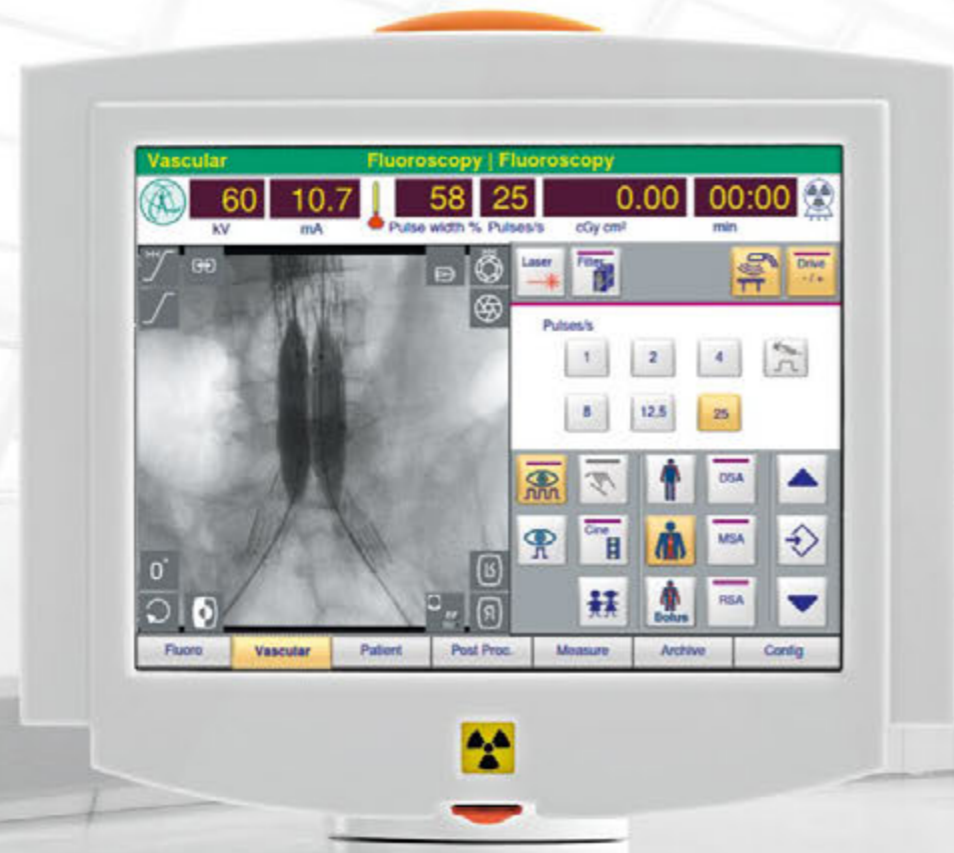
in a path based on decades of experience. This C-arm meets all of the demands that you and your team place on mobile imaging. The new Hybrid Edition features digital subtraction angiography, roadmapping and contrast media imaging – also with CO₂. These turn even demanding procedures such as AAA, heart valve implantations and stenting into routine clinical practice.



DIAGNOSTIC IMAGE QUALITY

Ziehm Vision RFD Hybrid Edition uses dual 19" flat-screens, which are designed for diagnostic purposes. With a new design and a radiance of up to 1000 cd/m², they provide more information per image than conventional monitors.





THE RIGHT ORGAN PROGRAM WITH JUST ONE CLICK

Every application presents specific challenges for imaging. Ziehm Vision RFD Hybrid Edition provides preconfigured organ programs with modified filter settings, pulse frequencies and characteristic curves. This ensures the best image quality for both vascular surgery (extremities, trunk, bolus) and also cardiac procedures.



The modular Position Control Center and Remote Vision Center can be mounted flexibly.



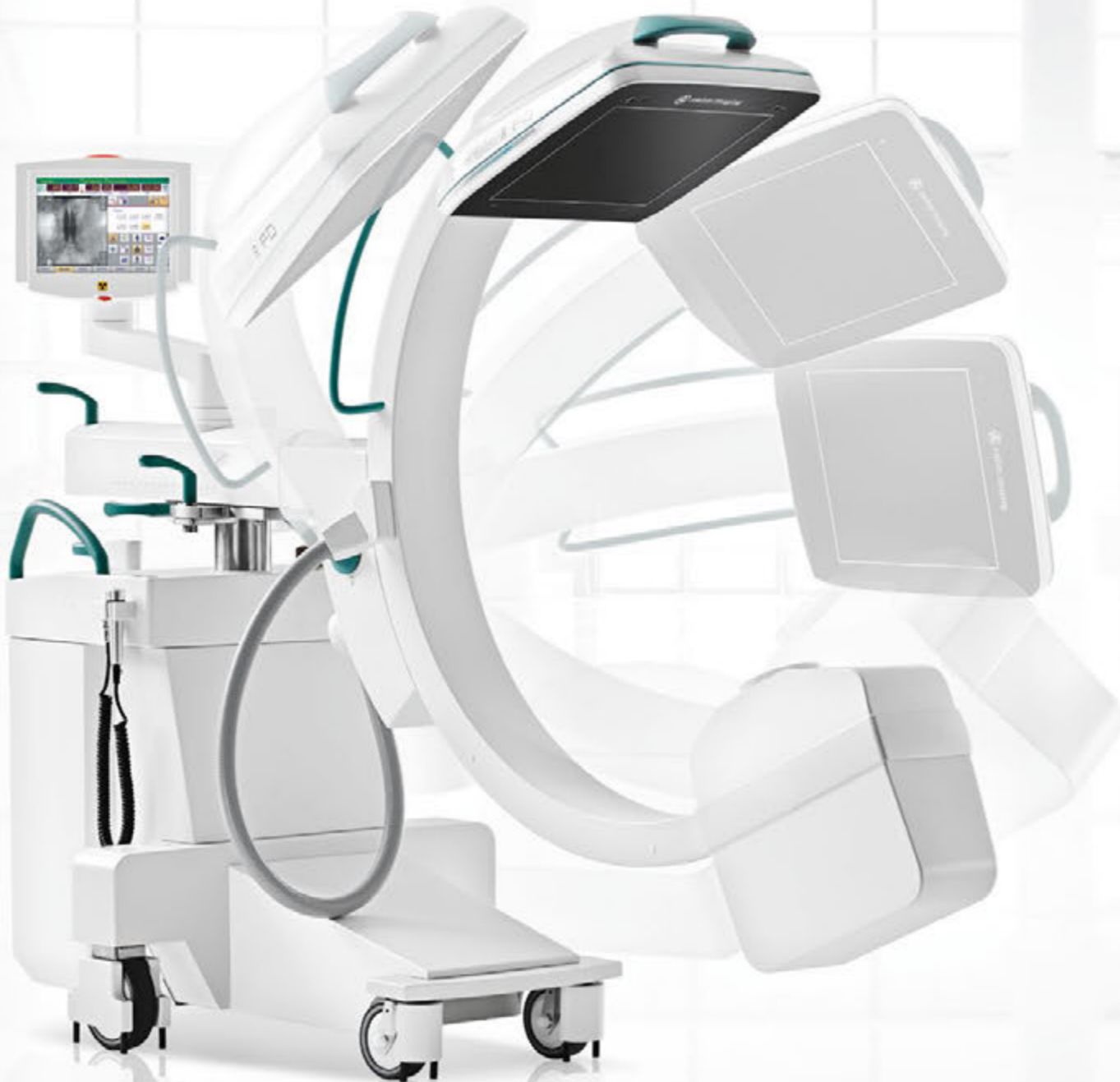
FULL CONTROL AT THE OR TABLE

The C-arm, including control of the 4 motorized axes, can be operated entirely via the Position Control Center (joystick module) and the Remote Vision Center (touchscreen). The control modules can be flexibly mounted to the sides of the OR table or to a separate stand thereby creating sufficient scope for sterile operation.

MOTORIZED MOVEMENT IN 4 AXES

For the first time a C-arm is equipped with motorization that allows control of 4 axes. The operator can use the Position Control Center to move the C-arm into the exact position desired. Operating the device right at the sterile OR table minimizes the time needed and guarantees maximum precision.





MEMORY FUNCTION FOR POSITIONING WITHIN SECONDS

The motorized C-arm features memory functions for 3 positions. These can be stored during the procedure and retrieved at any time. The system can thereby be repositioned precisely and fast. Additionally, the home button brings all movements back to the starting position.



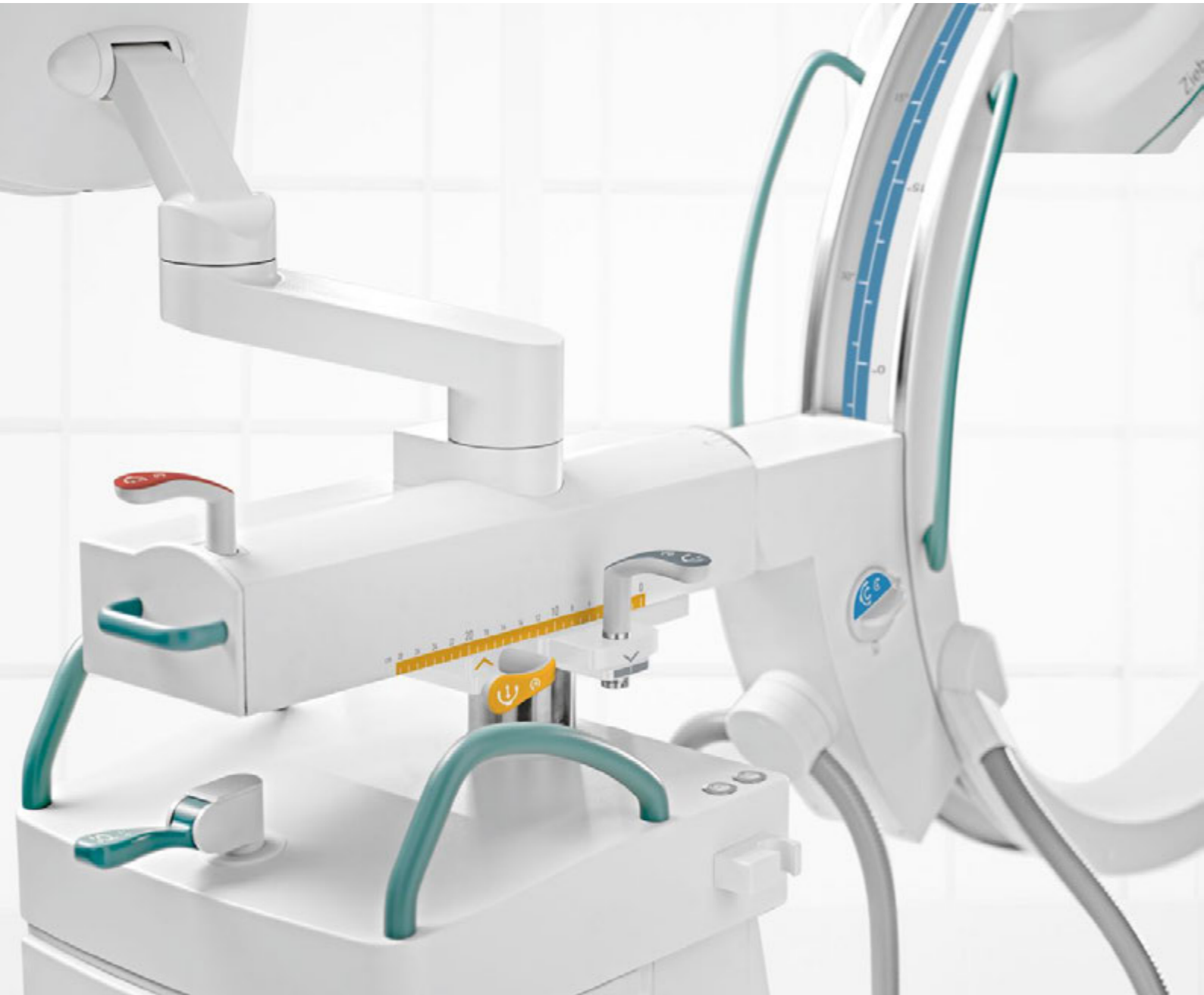
MORE ROOM FOR YOU IN THE OR

Ziehm Vision RFD Hybrid Edition features a generous C-arm opening of 83.5 cm and an ergonomically designed flat-panel. At the same time, the C-arm occupies a footprint of only 0.8 m², thus leaving adequate space for your OR team. This ensures a comfortable OR working environment even during interdisciplinary procedures.



SAFETY FOR YOUR PATIENTS

Patient safety is always top priority. Our motorized C-arms are therefore equipped with Distance Control – an assistance system supporting non-contact collision protection. The automatic surface detection is integrated around the lower edge of the flat-panel. In the patient's proximity, the motorized movement is slowed down. The movement stops immediately before entering a defined safety zone.



COLOR-CODING FOR CLEAR COMMUNICATION

Ziehm Vision RFD Hybrid Edition features color coded brake handles. These enable straightforward communication and clear instructions in the OR and minimize the chance of operating errors.

RELIABLE CONTROL

An intelligent safety feature prevents unintended movements of the C-arm: motorization can only be activated if the joystick is touched with at least two fingers. This means that the user must deliberately control the joystick in order to initiate movements of the C-arm.



ODDC places a matrix over the entire field of view and uses 256 measurement cells to analyze the position of the anatomy. All settings are automatically adjusted in real time – from dose to noise reduction.



BEST IMAGE QUALITY. MINIMUM DOSE.

SmartDose is a comprehensive concept for dose reduction. With a number of intelligent hardware and software solutions such as ZAIP (Ziehm Adaptive Image Processing), laser positioning, ODDC (Object Detected Dose Control), intelligent pulse technology and PreMag (radiation-free magnification), the dose can be lowered by more than 60% – with the same high image quality.

 **SmartDose**
Best image quality. Minimum dose.



ZIEHM VISION RFD HYBRID EDITION
FOR THE MOST DEMANDING APPLICATIONS
SUCH AS CARDIOLOGY, CARDIAC SURGERY, VASCULAR
SURGERY, INTERVENTIONAL RADIOLOGY, STENTING, EVAR,
TAVI, CO₂, CORONARY IMAGING, ELECTROPHYSIOLOGY, ANGIOPLASTY, ETC.



Visit the dedicated web special:
www.ziehm.com/hybrid-edition

Headquarters

Germany

Ziehm Imaging GmbH
Donaustrasse 31
90451 Nuremberg, Germany
Phone +49.(0)9 11.21 72-0
Fax +49.(0)9 11.21 72-390
info@ziehm-eu.com

USA

Ziehm Imaging Inc.
6280 Hazeltine National Dr.
Orlando, FL 32822, USA
Phone +1.(407) 6 15-8560
Fax +1.(407) 6 15-8561
mail@ziehm.com

Italy

Ziehm Imaging Srl.
Via Martiri di Legoreccio. 14
Località Croce
42035 Castelnuovo né Monti
Reggio Emilia, Italy
Phone +39.0522.610894
Fax +39.0522.612477
sergio.roncaldi@ziehm-eu.com

Brazil

Ziehm Medical do Brasil
Av. Roque Petroni Jr.,
1089 cj 904
04707-000 São Paulo, Brazil
Phone +55.(11)3033.5999
Fax +55.(11)3033.5997
samuel.almeida@ziehm.com

France

Ziehm Imaging S.A.R.L.
1, Allée de Londres
91140 Villejust, France
Phone +33.1 69 07 16 65
Fax +33.1 69 07 16 96
thierry.dodier@ziehm-eu.com
dominique.desvieux@ziehm-eu.com

China

Ziehm Medical Shanghai Co., Ltd.
Hongqiao New Tower Centre
Rm 06-07, 25/F
83 Loushanguan Road
Shanghai, P.R. China; 200336
Phone +86.(0)21.62369903
Fax +86.(0)21.62369916
kevin.tang@ziehm.net.cn

Russia

Ziehm Imaging Russia
4/17 bldg. 4A
Pokrovsky bulvar
Moscow, 101000, Russia
Phone +7.495.7757321
Fax +7.495.7757324
dmitry.makovkin@ziehm-eu.com

Singapore

Ziehm Imaging Singapore Pte. Ltd.
7030 Ang Mo Kio Ave 5
#08-53 Northstar@AMK
Singapore 569880, Singapore
Phone +65.639.18600
Fax +65.639.63009
colin.loo@ziehm-eu.com