

A COMPREHENSIVE SELECTION OF PROBES

Quality and Value in Portable Color Ultrasound

Convex

CN2-8



- Applications : Obstetrics, Gynecology, Abdomen, Renal, Fetal Heart
- Center Frequency : 3.5MHz
- Field of View : 60°

C2-4/20



- Applications : Abdomen, Cardiac
- Center Frequency : 3.0MHz
- Field of View : 90°

CN4-9



- Applications : Neonatal, Pediatric, Vascular
- Center Frequency : 6.5MHz
- Field of View : 150°

C2-8 (2port system only)



- Applications : Abdomen, Obstetrics, Gynecology, Renal, Fetal Heart
- Center Frequency : 4.6MHz
- Field of View : 68°

C2-5 (2port system only)



- Applications : Abdomen, Obstetrics, Gynecology, Renal, Fetal Heart
- Center Frequency : 3.35MHz
- Field of View : 47.7°

Linear

LN5-12/40



- Applications : Small Parts, Breast, Vascular, Musculoskeletal
- Center Frequency : 7.5MHz
- Footprint : 40mm

L5-12/60



- Applications : Small Parts, Breast, Vascular, Musculoskeletal
- Center Frequency : 7.5MHz
- Footprint : 60mm

L E5-12



- Applications : Small Parts, Breast, Vascular, Musculoskeletal
- Center Frequency : 7.5MHz
- Footprint : 40mm

LN5-12 (2port system only)



- Applications : Small Parts, Breast, Vascular, Musculoskeletal
- Center Frequency : 8.0MHz
- Footprint : 38mm

Endo-Cavity

EC4-9



- Applications : Obstetrics, Gynecology, Urology
- Center Freq : 6.5MHz
- Field of View : 150°

EVN4-9 (2port system only)



- Applications : Obstetrics, Gynecology, Urology
- Center Freq : 6.7MHz
- Field of View : 148°



CT-SonoAce R3 1.0-FTW-140115-EN



SONOACE R3

A NEW STANDARD IN PORTABLE COLOR ULTRASOUND

We set a new standard in portable color ultrasound with the SonoAce R3, an exceptional portable color ultrasound system that displays higher image quality for all its applications. Although small and compact, the SonoAce R3 offers you full diagnostic capabilities.



The SonoAce R3 is a fully-featured portable digital color ultrasound system with imaging capabilities comparable to those of a full-sized system.



Create your own workspace, in any environment

The SonoAce R3 is fully-featured, portable and is capable of performing all the most important ultrasound functions.

- FSI (Full Spectrum Imaging™)
- SRF (Speckle Reduction Filter)
- QuickScan™
- Harmonic Imaging

Arrange your workspace

The basic review, analysis, networking, and archiving capabilities of the SonoView™ provide the most advanced diagnostic tools to boost performance.

- SonoView™
- DICOM 3.0
- USB 2.0

Expand your imaging capacities

The SonoAce R3 utilizes the latest features, such as backlit keys, and a cart with probe holders to deliver high performance that can be used anywhere.

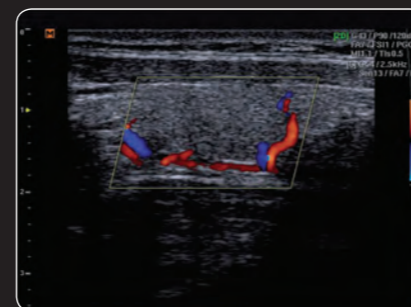
- 15" LCD Monitor
- Two Probe Ports (Option)
- Easily Height-Adjustable Cart-Based System
- Lightweight



Uterus



Kidney with power Doppler



Thyroid with color Doppler

