

## A COMPREHENSIVE SELECTION OF PROBES

### Curved Array Probes



#### C2-8

- Applications : Abdomen, Obstetrics, Gynecology, Renal, Fetal heart
- Center Frequency : 4.6MHz
- Field of View : 68°

#### C2-4 / 20

- Applications : Abdomen, Cardiac
- Center Frequency : 3.5MHz
- Field of View : 90°

#### CN2-8

- Applications : Abdomen, Obstetrics, Gynecology, Renal, Fetal heart
- Center Frequency : 3.3MHz
- Field of View : 60°

#### CN4-9

- Applications : Neonatal, Pediatric, Vascular
- Center Frequency : 6.7MHz
- Field of View : 146°

### Linear Array Probes



#### LN5-12

- Applications : Small Parts, Breast, Vascular, Musculoskeletal
- Center Frequency : 8MHz
- Footprint : 38.1mm

#### LN5-12/40

- Applications : Small Parts, Breast, Vascular, Musculoskeletal
- Center Frequency : 6.2MHz
- Footprint : 40mm

#### L5-12/60

- Applications : Small Parts, Breast, Vascular, Musculoskeletal
- Center Frequency : 8MHz
- Footprint : 60mm

### Endo-Cavity Probes



#### EVN4-9

- Applications : Obstetrics, Gynecology, Urology
- Center Frequency : 6.7MHz
- Field of View : 148°

#### EC4-9

- Applications : Obstetrics, Gynecology, Urology
- Center Frequency : 6.7MHz
- Field of View : 146°

# PRACTICAL, EFFICIENT, COMFORTABLE DIAGNOSIS

## SONOACE R5



CT-SONOACE R5 2.0-FTW-140519-EN

SAMSUNG

SAMSUNG MEDISON

© 2014 Samsung Medison All Rights Reserved.

Samsung Medison reserves the right to modify the design, packaging, specifications, and features shown herein, without prior notice or obligation.

SAMSUNG

SAMSUNG MEDISON

# PRACTICAL, EFFICIENT, COMFORTABLE DIAGNOSIS

The SonoAce R5 is designed to provide you not only the latest in diagnostics function, but also the greatest possible user convenience. Ergonomic design, user interface and the quality of its everyday functions, such as QuickScan™, FSI™, and THI, will enable you to extend your diagnostic boundaries while enjoying a more comfortable working environment.



15 inch LED Monitor



Lifting Control Panel



Front and Rear Handles



## More convenient and comfortable working environment

The SonoAce R5 is a slim and compact ultrasound system, featuring the latest ergonomic design. The lifting control panel, front and rear handles and lightweight system make the SonoAce R5 easy to move and use in any situation. The improved user interface and customizable menus provide the highest quality of working environment.

- Lifting Control Panel
- Front and Rear Handles
- Slim and Lightweight
- 15 inch LED Monitor
- Backlit Keyboard

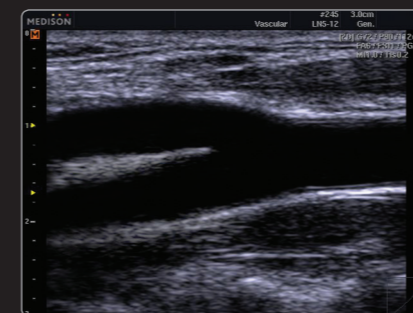
## More practical capabilities for ultrasound diagnosis

The SonoAce R5 ultrasound system provides versatile performance for its compact design. The various measurement packages and the advanced user-interface performance deliver quick & easy observation. Full Spectrum Imaging™ is one of the imaging features which gives improved images and help users for better diagnosis.

- QuickScan™
- Multiple Measurement Packages
- Tissue Harmonic Image (THI)
- FSI (Full Spectrum Imaging™)
- Pulse Inversion Harmonic Imaging

## Multiple transducers to enable extended diagnosis

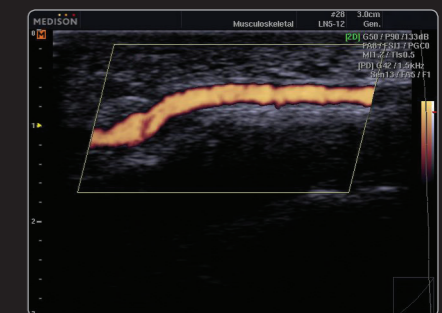
The SonoAce R5 supports linear and convex probes, extending your diagnostic capabilities.



Carotid artery



Gallbladder stone



Hand with power Doppler